

Wales Coastal Monitoring Centre

May 17, 2018



Background

The need to improve the co-ordination of coastal monitoring and data collection led to the creation of the 1st Wales Coastal Monitoring Centre in 2010.

The WCMC was funded by the Welsh Government until August 2014 and was hosted by Gwynedd Council.

New Business Case was submitted identifying a strategic risk based approach with habitat and near-shore wave data as the preferred option

Proposed cost was deemed too excessive by WG at a time of reducing budget



Background

- A new joint delivery model was developed
- Monitoring aspirations were reviewed
- New business case was submitted in January 18 and 2 years funding + a third in principle was granted by Welsh Government.



Considerations

- What is the best model?
- Expertise, capacity and needs
- Funding availability
- Present needs for decisions
- Priorities
- Opportunities



Format & Function

- Consortium approach drawing expertise from public sector organisations
- 2 FTEs employed by Vale of Glamorgan
- Procure, manage and deliver a monitoring programme on behalf of Maritime Local Authorities
- Provide consistent and seamless data gathering freely available for all to use.

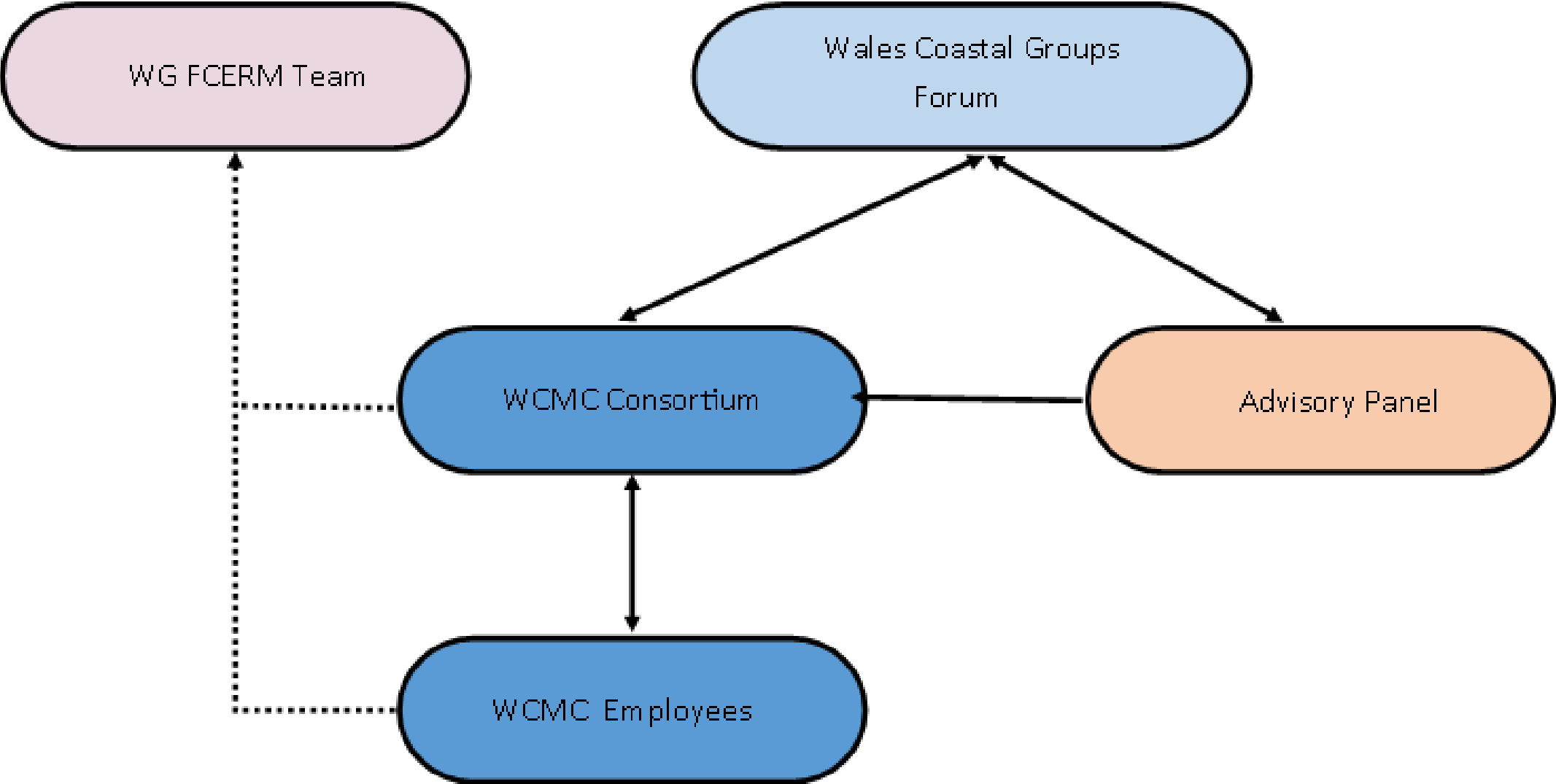


Overview of new proposal

- Joint bid between Conwy Council, Gwynedd Council, Vale of Glamorgan and WLGA
- Initial 3.5 years period
- 2 FTEs employed
- Vale of Glamorgan host authority
- Gwynedd and Conwy to deliver monitoring programme in North Wales
- Proposed monitoring programme is bare minimum based on 313 sites



Governance



Deliverables Year 1

Year 1

- Reinstate the WCMC with 2 posts being created
- Formalise joint working arrangements through an MoU
- Develop partnership arrangements with Welsh Universities, the Channel Coastal Observatory (CCO) and Coastal groups
- Set-up Advisory Board
- Deliver an initial monitoring programme from year 1



Monitoring Techniques

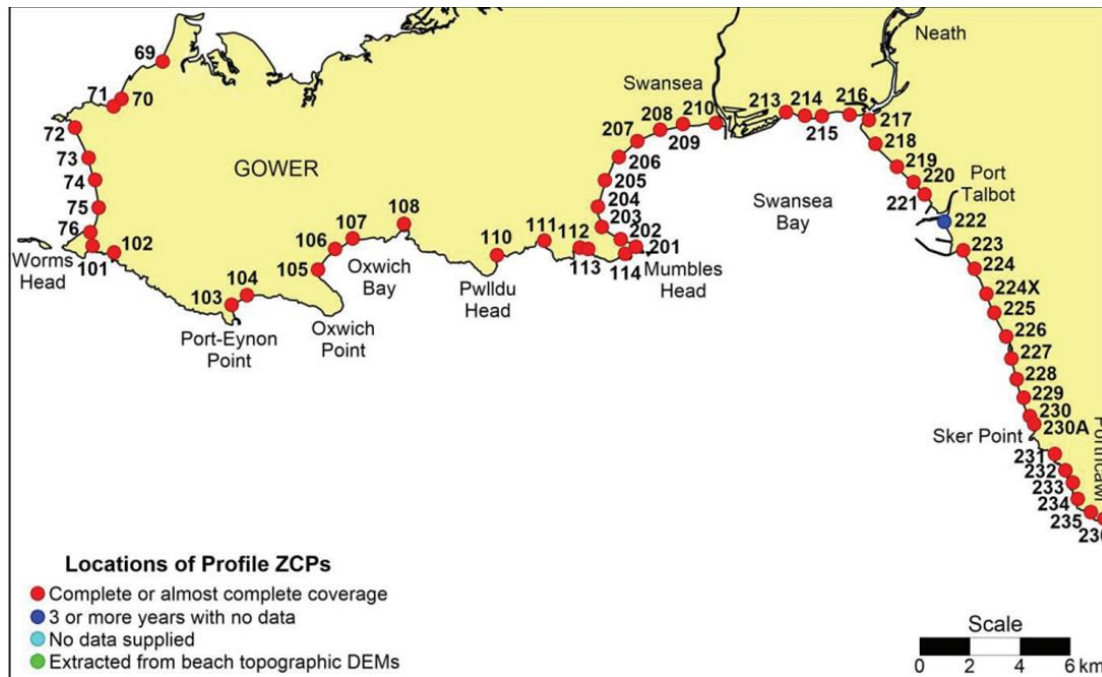
313 sites to be monitored using a variety of methods:

Topographic Surveys

Beach Volumetric analysis

LiDAR

New Tech



Next Steps

- Funding secured
- Advertise for Project Manager
- Finalise management structure and MoU
- Set-up Advisory Panel
- Work packages tendered

- Consider and ratify a risk based methodology for the selection of future monitoring locations



Any questions?

